

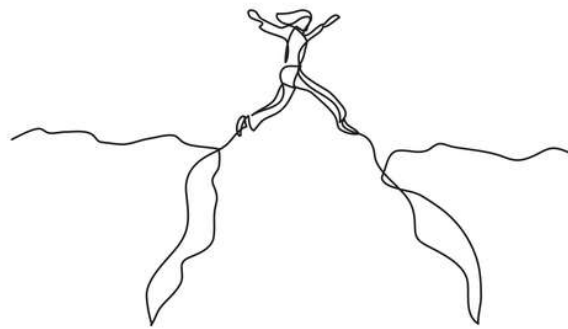
Lived Experience Consultation

23rd July 2020

for the

New Darwin Adult Mental Health Centre

Experts by Experience



Organised by the

Northern Territory Lived Experience Network

Date & Time	Thursday the 23 rd of July 2020 9 am to 2 pm (catering provided)
Venue	Community Room 2 Palmerston Recreation Centre 11 The Boulevard, Palmerston City
RSVP	Noelene Armstrong e: contact@livedexperiencent.net m: 0439 100 360

RSVP is essential to manage social distancing requirements within the Consultation's COVID-19 Safety Plan. Participants are asked to indicate if they can attend only part of the Consultation and if they have any dietary requirements.

ADDITIONAL INFORMATION

Definition of Lived Experience:

People with Lived Experience include:

- People who are living with (or have lived with) issues related to suicide, mental illness, trauma, alcohol and other drug use.
- Family members or friends who provide care and support (or have provided care and support) to a person living with (or has lived with) issues related to suicide, mental illness, trauma, alcohol and other drug use.

Suicide lived experience encompasses people who think about suicide, people who have attempted suicide, people who care for someone with suicidal behaviour, people who are bereaved by suicide, and people who are impacted by suicide in some other way, such as a workplace incident.

Lived Experience Participation:

The purpose of the Consultation is to create a safe space for people with Lived Experience to share the knowledge and experience they have gained through

- Access, attempted access, or no knowledge of how to access services for issues related to mental illness, trauma, alcohol or other drug use and suicide.
- Knowledge and experience gained both within the Darwin region and in other areas.

It is important to note that this Consultation is for people with Lived Experience only.

People with Lived Experience who would like to attend with a Support Person are welcome to register for both people to attend. However, we request that the Support People do not include people acting in a professional or working capacity.

Clinicians or Mental Health Professionals seeking to attend for the purpose of observing are not welcome to attend and will be asked to leave.

Outline for Consultation:

The Consultation will include

- An introduction to the NT Lived Experience Network and its objectives
- An overview for the proposed Adult Mental Health Centre
- The purpose of the Lived Experience Consultation
- Guided workshop activities for people to share their experiences to inform the Darwin Adult Mental Health Centre
- What will happen with the information gathered from the Consultation